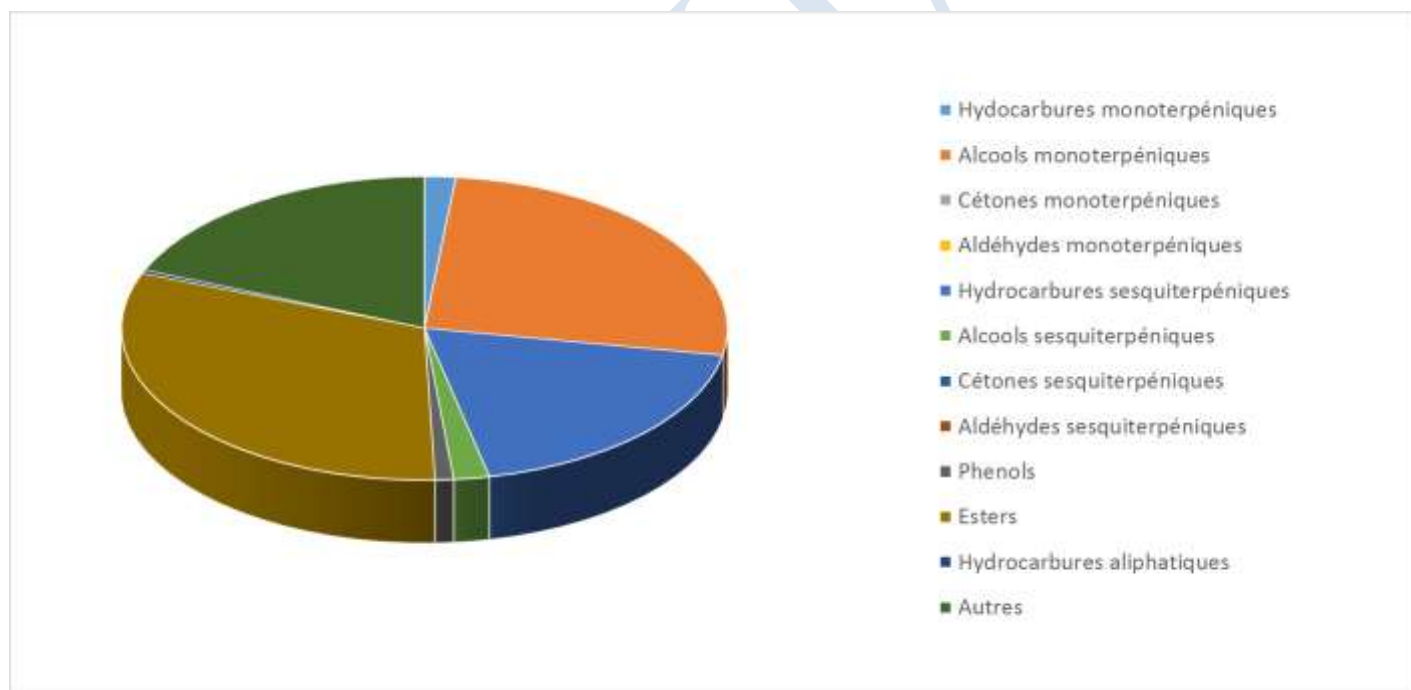


Date : 24/07/2023  
 Référence produit / Product reference : FLE116  
 Huile essentielle de / Essential oil of : Ylang-Ylang extra  
 Numéro de lot / Lot Number : AP190723MG  
 Densité à 20°C (g/cm<sup>3</sup>) / Density to 20°C (g/cm<sup>3</sup>) : 0.94  
 Indice de réfraction / Refractive index : 1.4933  
 Pouvoir rotatoire à 20°C / Optical rotation to 20°C : ND  
 Mode de culture / Culture mode : Cultivé / Cultivated  
 Pays / Country : Madagascar  
 Date de production / Production date : 03/2023  
 D.L.U. / Shelf life : 04/2028  
 Mode d'extraction / Extraction mode : Distillation à la vapeur / Steam distillation  
 % Bio / % Organic : 100%  
 Nom Latin / Latin Name : Cananga odorata  
 Parties utilisées / Used Parts : Fleurs / Flower





Molécule	%
ACETATE DE 2-METHYLBUT-3-EN-2-OL	0.100
ACETATE DE PRENYLE	0.300
<b>ALPHA-PINENE</b>	0.290
<b>BETA-PINENE</b>	0.110
BETA-MYRCENE	0.140
ACETATE DE CIS-3-HEXENYLE	0.160
ACETATE D'HEXYLE	0.130
METHYL-PARA-CRESOL	14.320
<b>LIMONENE *</b>	0.120
1,8-CINEOLE (EUCALYPTOL)	0.980
<b>BENZYLE ALCOHOL</b>	0.080
PARA-CRESOL	0.110
<b>TERPINOLENE</b>	0.010
<b>ALPHA-TERPINEOL</b>	0.240
BENZOATE DE METHYLE	7.670
<b>BENZOATE DE BENZYLE *</b>	3.720
BENZOATE DE GERANYLE	0.020
BENZOATE DE PRENYLE	0.360
<b>LINALOL *</b>	22.470
ACETATE DE BENZYLE	4.820
<b>SALICYLATE DE BENZYLE *</b>	0.840
ACETATE DE PARA-CRESYLE	0.320
BENZOATE D'ETHYLE	0.240
<b>SALICYLATE DE METHYLE</b>	0.230
METHYL-CHAVICOL	0.360
NEROL	<b>0.020</b>
ACETATE DE PHENYLETHYLE	0.010
<b>GERANIOL *</b>	3.070
ALPHA-CUBEBENE	0.030
<b>EUGENOL *</b>	0.980
ALPHA-COPAENE	0.270
ACETATE DE GERANYLE	11.180
BETA-CUBEBENE	0.180
ISO-BETA-CUBEBENE	0.130
BETA-ELEMENE	0.210
<b>BETA-CARYOPHYLENE</b>	4.990



ALPHA-CARYOPHYLLENE	1.700
OXYDE DE CARYOPHYLLENE	0.110
ACETATE DE CINNAMYLE	0.860
GAMMA-MUUROLENE	<b>0.240</b>
ALPHA-MUUROLENE	0.190
(T)-MUUROL	0.410
GERMACRENE D	8.390
ALPHA-FARNESENE	1.480
<b>FARNESOL*</b>	1.200
ACETATE DE FARNESYLE	0.500
GAMMA-CADINENE	0.160
DELTA-CADINENE	0.860
ALPHA-CADINOL	0.290
DELTA-CADINOL	0.110
NEROLIDOL	0.060
<b>Total</b>	<b>95.770</b>

\* = Substance(s) allergène(s) / allergen(s)

\*\* = Substance(s) classée(s) CMR / Substance(s) classified as CMR

